

# Using Elluminate in CS



Katrin Becker

# What is Elluminate?

- What Synchronous Online Systems Have You used?
- Who does online courses?
- Elluminate is:
  - ❖ Synchronous, online
  - ❖ Java-Based
  - ❖ Runs in Most Browsers
  - ❖ Works on Dial-up. Requires 56K
  - ❖ Has audio, video, chat, whiteboard, presentation, participant feedback,...



# I am NOT an Elluminate employee

## My Elluminate Experience:

- Participant in EdTech grad classes (2003)
  - ❖ From my office
- Moderator in course I was teaching (had textbook author give a talk, 2005)
  - ❖ In the classroom
- Presenter at online conference (nmc 2005)  
[http://archive.nmc.org/events/2005fall\\_online\\_conf/index.shtml](http://archive.nmc.org/events/2005fall_online_conf/index.shtml)
  - ❖ From my home
- Presenter of 'Simulcast' of Departmental seminar (2007)
  - ❖ In seminar room



# Goals of this Tutorial

- First exposure
- Introduction to what is possible
- First hand experience at ease of use
- How to get more information

# What Can I Do With It?

## Teaching

- Reach more students in more ways
- Teach instructor-led courses online
- Add real-time interaction to asynchronous courses
- Leverage instructors across physical schools
- Enable students to collaborate on projects
- Record traditional classes for later reference
- Bring Industry experts from around the world into the traditional classroom
- View live demos via high-resolutions web cam



# What Can I Do With It?

## Tutoring and Mentoring

- Hold virtual office hours
- Provide one-on-one instructor or peer-based tutoring
- Receive mentoring from peers or professionals

# What Can I Do With It?

## Meetings

- Meet with faculty and staff
- Facilitate administration and operations
- Share ideas, brainstorm
- Review and update course content



# What Can I Do With It?

## Events

- Hold web-based or blended onsite/online events
- Produce conferences and seminars
- Conduct workshops



# What Can I Do With It?

## Professional Development

- Train faculty and staff
- Learn new instruction methodologies, develop best practices
- Provide new tools and technology updates, training
- Disseminate policies, procedures
- Enable teacher communication, discussion, collaboration



# How Does It Compare?

- University of North Carolina  
<http://www.unctlt.org/initiatives/slms/index.htm>
- Compared [Centra](#), [Elluminate](#) (v7), [HorizonWimba](#), and [Adobe Breeze](#) in 2006
- *“In sum, the Task Force found Elluminate and Centra to be the strongest all-around SLMS tools with Elluminate offering the most universal access..”*



# Illuminate 6.5 Evaluation

## ❖ Strengths

High quality VoIP, video, whiteboard, and AppShare

Accessibility

LMS integration

Participant management

## ❖ Weaknesses

Single microphone

PowerPoint file resolution

Content management



# Can be integrated with:

- Blackboard
- Moodle
- Sakai
- eCollege



# How Much?

- Service Options:
- Hosted: software is on their servers
- Server Based: on your servers
- Pricing based on concurrent seats 10, 20, ... Unlimited
- Minimum ~10 seats: \$5-6000/year
- (i.e. \$5-600/seat)
- Can be shared in a consortium
- or collective



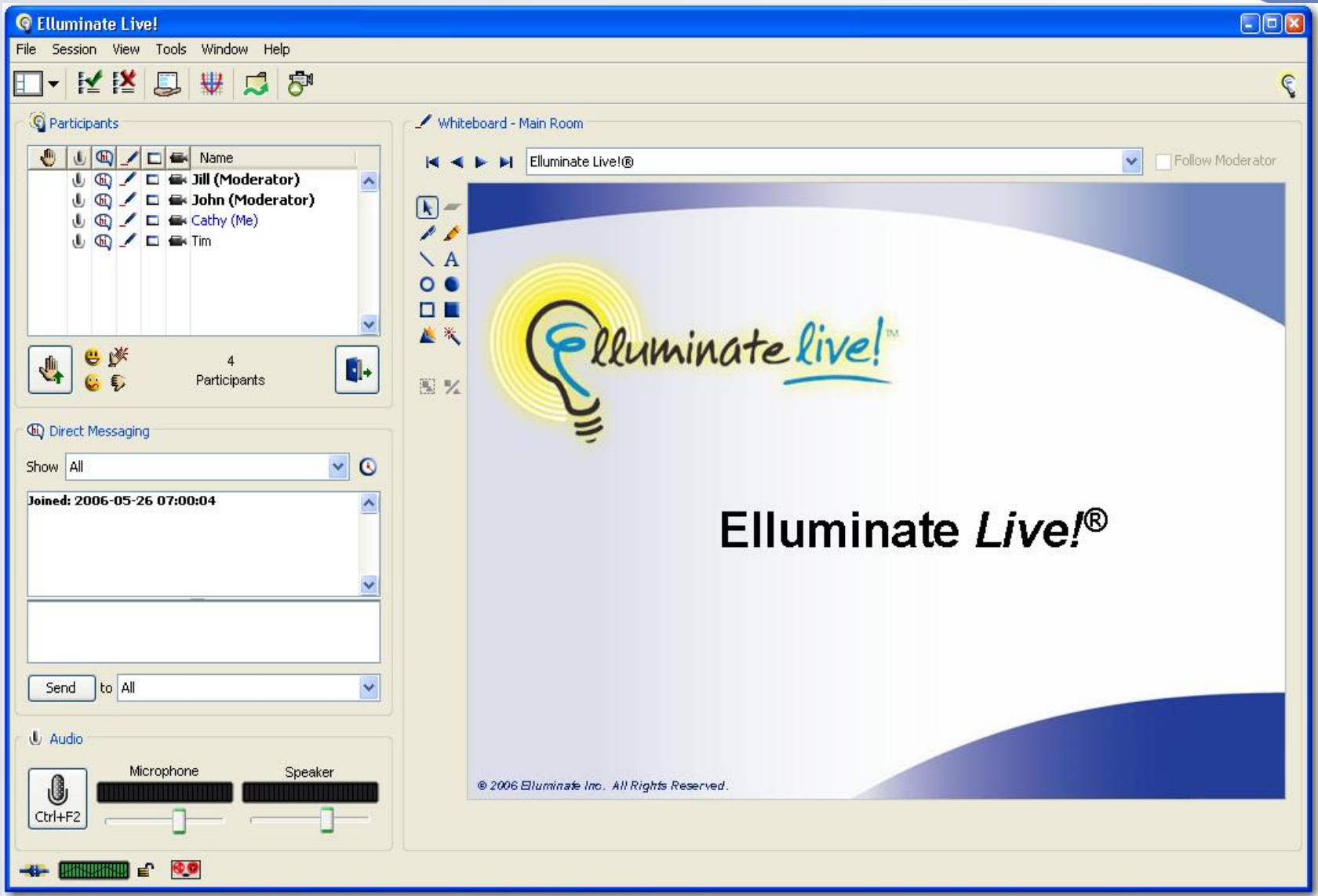


# **Elluminate *Live!***

## **Participant Orientation Slides**



# The Participant Interface



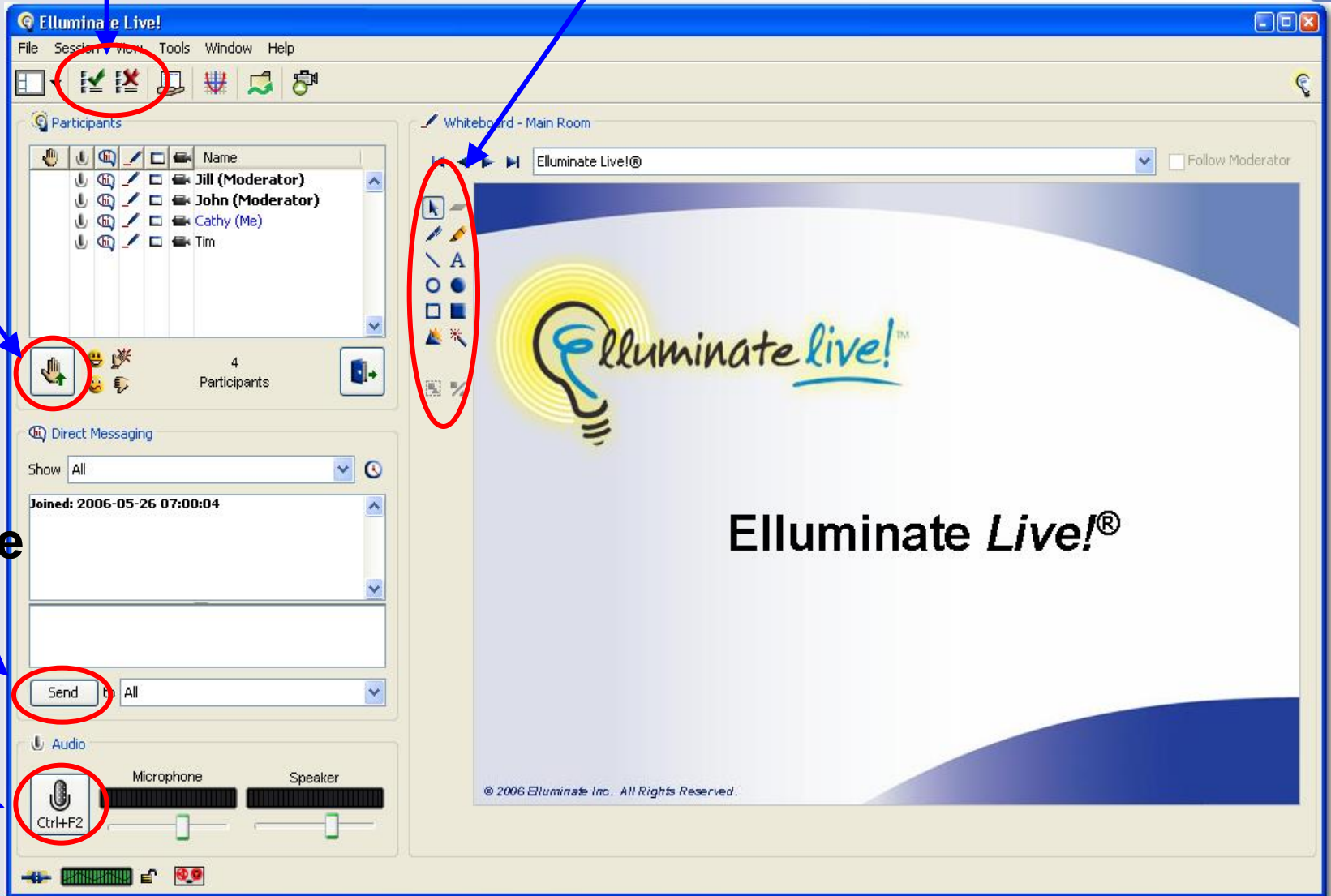
**Polling**

**Whiteboard Tools**

**Raise Hand**

**Send Message**

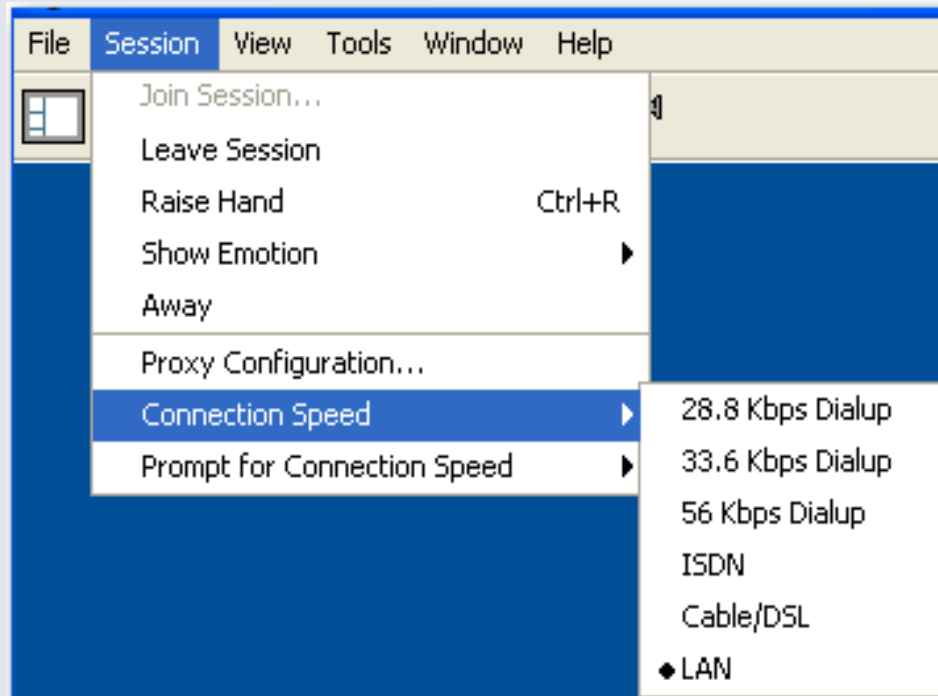
**Talk**





# Connection Speed

- ➔ Set your Connection Speed based on your Internet connection

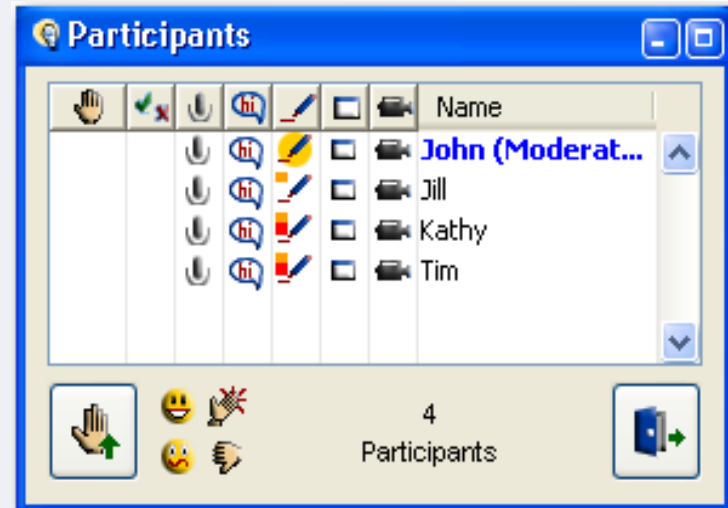


# Participant Info Window

➔ Raise/Lower Hand

➔ Emoticons

➔ Step Away



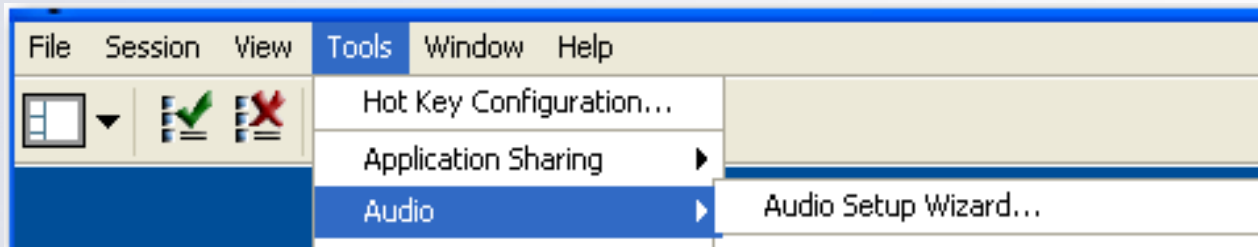
# Audio

➔ **Permission for Using Microphone**

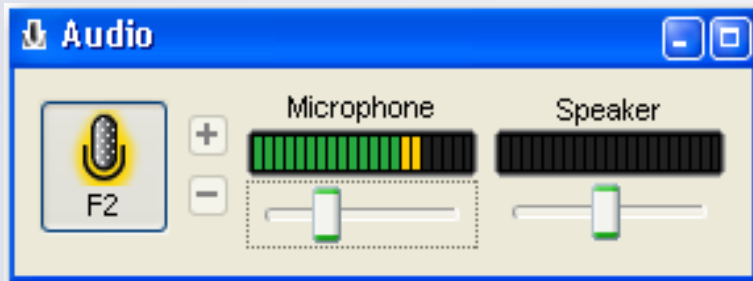


➔ **Audio Set Up Utility**

– **Tools → Audio → Audio Setup Wizard**



➔ **Optimal microphone setting**



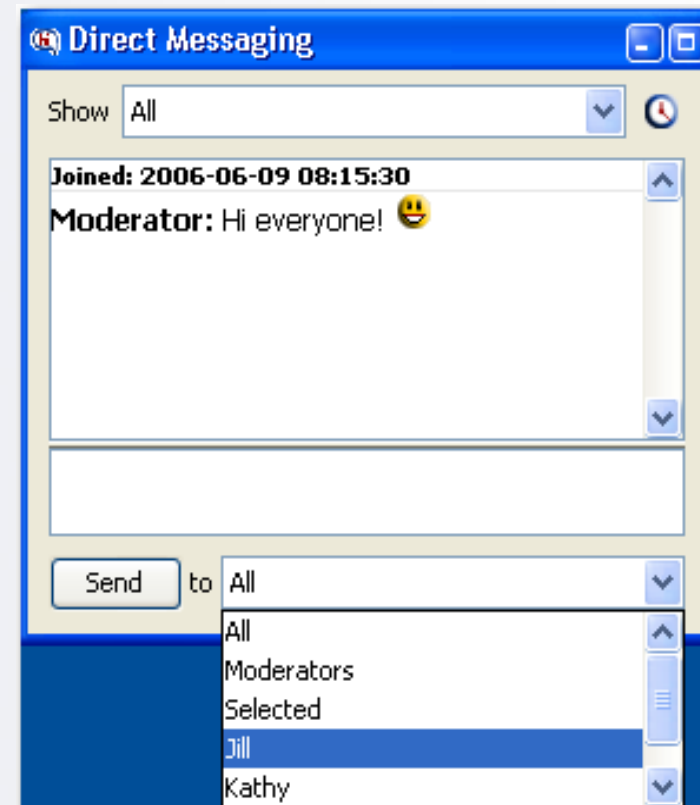
# Direct Messaging Window

## ➔ Permission for Using Direct Messaging



## ➔ Send a Text Message

- Public
- Private

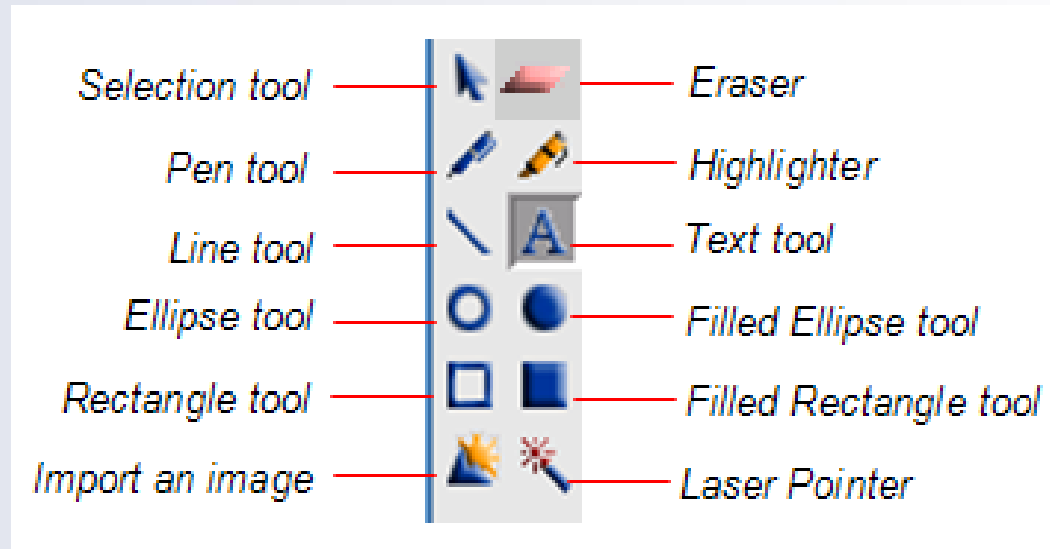


# Whiteboard Tools

➔ Permission for using Whiteboard






➔ Tools



# Polling

## ➤ Types

- Yes/No 
- Multiple Choice 
- Slowdown/Speedup Class Pace 

➤ **Responses will appear in the Participants window if the moderator has selected to show them**



# Resources

- [http://www.illuminate.com/academic\\_edition.jsp](http://www.illuminate.com/academic_edition.jsp)

Online registration is full, but it will be recorded

